



## 20 Junction Way, Mangotsfield, Bristol, BS16 9LA

£230,000

We are delighted to offer for sale this deceptively spacious two bedroom, contemporary style apartment with allocated parking space. The property is offered for sale with no onward chain and benefits from uPVC double glazing, gas central, fitted kitchen/diner and modern white bathroom suite.

The accommodation comprises private hallway, with space for cycles etc, stairs to first floor, spacious hallway, living room room, kitchen/dining room, two double bedrooms, and bathroom. This superb property offers the perfect starter home or for those of you that may now consider the time is to downsize. Situated on this popular development close to the Bristol to Bath cycle path and having good access to the ring road and motorway network. We fully recommend an early viewing. Energy Rating C. Council Tax B. 977 Years Remaining on the lease. Green Space fee £350p/a.

- First Floor Flat
- Own Entrance
- Large Hallway
- Lounge
- Kitchen Diner
- Two Double Bedrooms
- Bathroom
- Off Street Parking
- GCH & D/Glazing
- No Onward Chain

### Viewing

Please contact our Brunt & Fussell Ltd Office on 01179566004 if you wish to arrange a viewing appointment for this property or require further information.



2



1

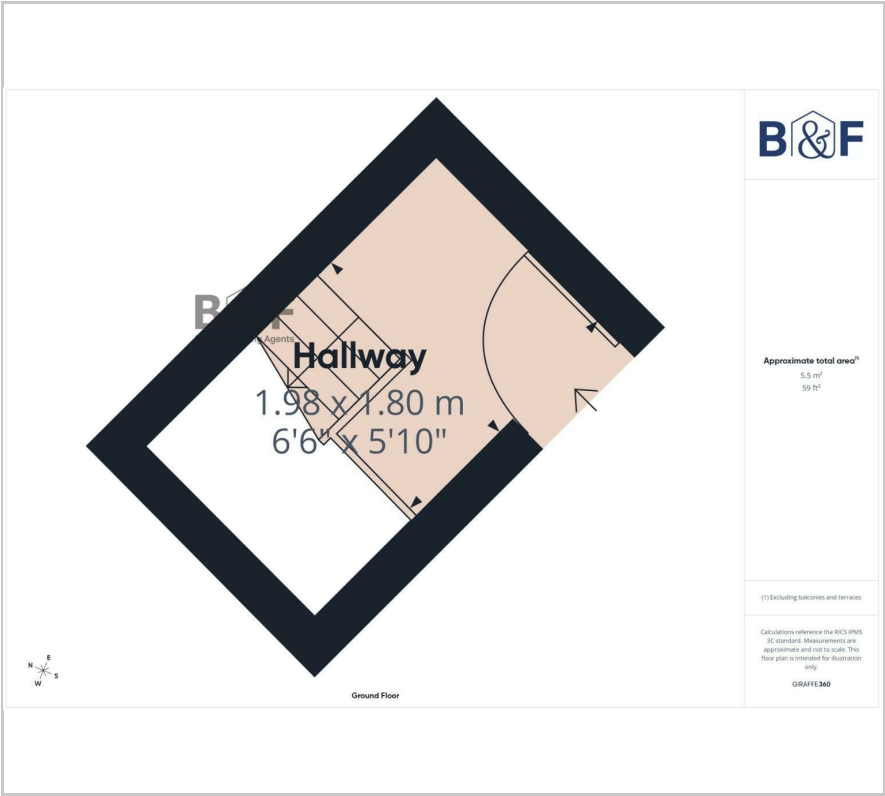


1

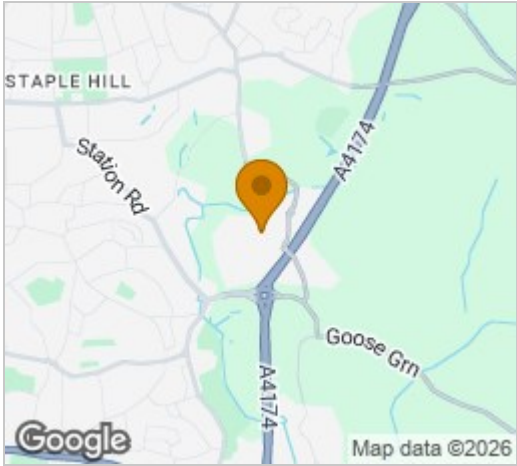


C

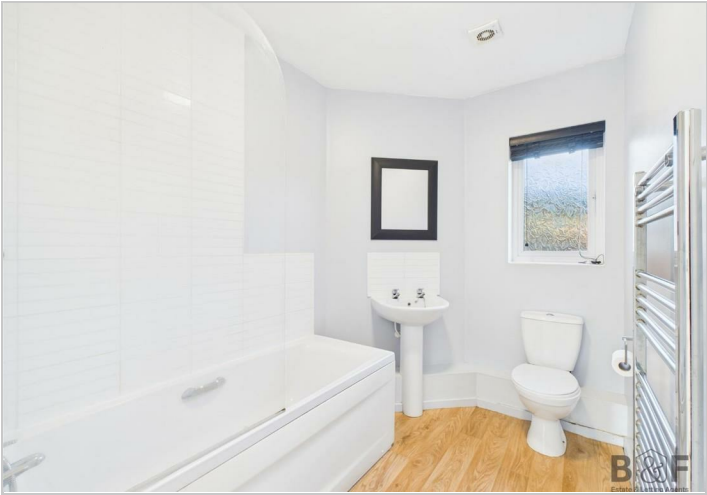
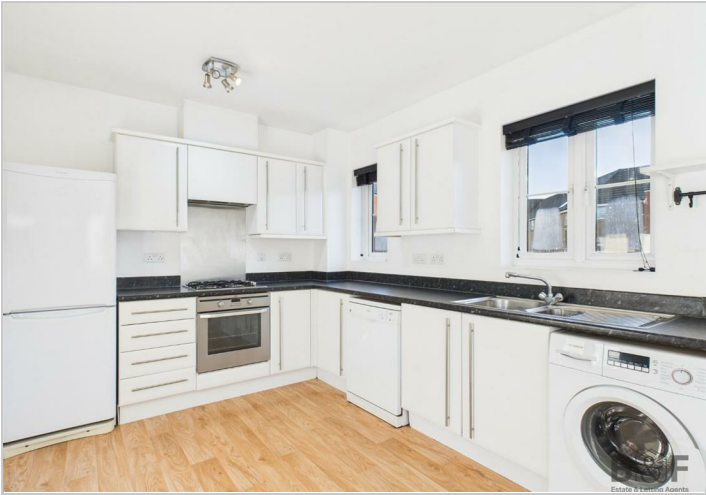
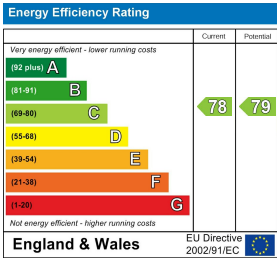
Floor Plan



Area Map



Energy Efficiency Graph



These particulars, whilst believed to be accurate are set out as a general outline only for guidance and do not constitute any part of an offer or contract. Intending purchasers should not rely on them as statements of representation of fact, but must satisfy themselves by inspection or otherwise as to their accuracy. No person in this firms employment has the authority to make or give any representation or warranty in respect of the property.